



**H2 WINDOW CASEMENT, AWNING OR FIXED**

HYBRID series: interior & exterior

The **HYBRID H2** window series merge from performance of PVC and aesthetical of the aluminum. Assembled with aluminum profiles exterior and interior, this window offers an excellent thermal barrier with its internal welded PVC. The **H2** window is available in casement, awning or fixed openings and meets residential and commercial standards.

**FEATURES**

- 5 3/4" or 6 9/16" frame, with interior and exterior aluminum extrusions covering the 5 1/4" thermal break made of rigid PVC.
- Thermo double or triple glazing + argon gas
- Stainless steel bearing hardware with superior performances and new design
- Crank handle opening mechanism and multipoint hardware
- Triple weather stripping
- **Integrated 5/8" J** for gypsum insertion
- Standard exterior colors: White, black and commercial brown and standard interior color: Black
- Thermo barrier painted to match interior aluminum color
- Screen set to the interior (*Aluminum frame with fiberglass screen mesh*)

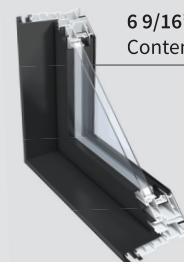
**OUTSIDE VIEW**



**OPTIONS**

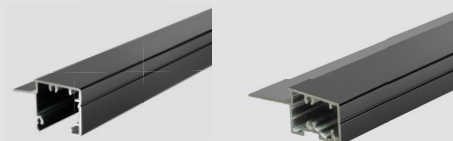
- Clear anodized finish inside and outside
- White PVC thermal break
- Various exterior cladding moldings
- Wood extension 5/8" covered with PVC (maximum 10 3/4")
- Aluminum interior groove cover (J)
- Selection of special glass
- Divided lights and integrated grids
- Hinge restrictors
- Illimited colors available, painted at Abritek

**FRAMES**



**6 9/16" Frame**  
Contemporary sash

**MOLDING**





Over the years, **Abritek Doors and Windows** has always stood out from the industry standard with their innovative and high-end products that meet today's and tomorrow's needs.

Continuous improvement and rapid tailoring to our customers' expectations represent our way of mastering the art of production.

## STRUCTURAL AND THERMAL PERFORMANCES

**H2** series of casement and awning windows are conformed with the harmonized window standard AAMA/WDMA/CSA 101/I.S.2/A440, tested by independent laboratories (AIR-INS), they qualify for ENERGY STAR® (ER) and meet the following performance:



The only windows tested at -30°C.  
4500 open/close cycles



Watertightness at 20°C



Airtightness at 20°C and at -30°C

## STRUCTURAL PERFORMANCES

Model	Standards	Air Tightness	Water Resistance (PA)	Wind-load Resistance (PA)	Forced Entry	Rating Size
Casement	AAMA/WDMA/CSA 101/I.S.2/A440	A1 A2 <b>A3</b>	140       <b>720</b>	720     <b>3360</b>	F10 <b>F20</b>	LP-CP70-C (32" X 63" H2)
Awning	AAMA/WDMA/CSA 101/I.S.2/A440	A1 A2 <b>A3</b>	140       <b>720</b>	720     <b>3360</b>	F10 <b>F20</b>	LC-CP70-AP (47" X 32" H2)
Fixed	AAMA/WDMA/CSA 101/I.S.2/A440	Fixe	140       <b>720</b>	720     <b>3360</b>	<b>F10</b> F20	CW-CP70-FW (96" X 72" H2)

**HYBRID H2** series meet ENERGY STAR® Canada criteria and reach the Energy Efficiency (ER), of 36 for casement and 43 for fixed window. Result may vary depending on chosen sealed unit.

PVC profiles are produced with a special PVC powder formula that was developed to get an outstanding finish but also strong enough to face our rude Northern climate.



Concerned about the environment, Abritek uses recycled PVC for the thermal barrier of the **H2** window. The recycled PVC meets all manufacturing standards and is used in the non-visible parts of the window.

## WARRANTY & SERVICE



The best warranty in industry

- PVC: 20 years
- Sealed Unit: 20 years
- Hardware: 10 years
- Paint and aluminum: 10 years
- Labour: 1 year

A family business since 1947!

Abritek Doors and Windows provides a **qualified customer service** which is intended to be fast and efficient.

### ACCREDITATIONS



MANUFACTURER OF THE BANNER



**CONCERTO**  
WINDOWS

BY THERMOPLAST

Made in Quebec

**ABRITEK**  
DOORS & WINDOWS MANUFACTURER

DISTRIBUTED BY



FIND YOUR RETAILER AND MORE INFORMATION [ABRITEK.CA](http://ABRITEK.CA)