



Over time, AbrisTek Doors and Windows have always stood out with new and cutting-edge products that meet the current standards of the industry, but also those of tomorrow. For the sake of continuous improvement and rapid adaptation to customer needs, our products are the perfect expression of the mastery of our art.



Concerned about the environment, AbrisTek uses recycled PVC for thermal insulation barrier of the casement hybrid window serie. Recycled PVC meets all manufacturing standards and is used in non-visible parts of the window.

ACCREDITATIONS



MANUFACTURER OF THE BANNER



Made in Quebec

STRUCTURAL AND THERMAL PERFORMANCES

PVC and HYBRID series for casement and awning windows conforms to harmonized window standard AAMA/WDMA/CSA 101/I.S.2/A440, tested by independent laboratories (AIR-INS), are qualified ENERGY STAR® (ER) and meets the following performance standards:



The only windows tested at -30 °C. 4500 open/close cycles



Watertightness at 20 °C



Airtightness at 20 °C and at -30 °C

STRUCTURAL PERFORMANCES

Model	Standards	Air Tightness	Water Resistance (PA)	Wind-load Resistance (PA)	Forced Entry	Rating Size
Casement	AAMA/WDMA/CSA 101/I.S.2/A440	A1 A2 A3	140 720	720 3360	F10 F20	LC-CP70-C (36" X 72" PVC) LP-CP70-C (32" X 63" HYBRID)
Awning	AAMA/WDMA/CSA 101/I.S.2/A440	A1 A2 A3	140 720	720 3120 720 3360	F10 F20	LC-CP65-AP (47" X 32" PVC) LC-CP70-AP (47" X 32" HYBRID)
Fixed	AAMA/WDMA/CSA 101/I.S.2/A440	Fixed	140 720	720 3360	F10 F20	CW-CP70-FW (72" X 72" PVC) CW-CP70-FW (96" X 72" HYBRID)

PVC and HYBRID series meets qualification criteria ENERGY STAR® Canada and reached energy efficiency (ER) up to 40 for casement/awning and 47 for fixed window. The results vary according to the desired sealed units.

Profiles are made of PVC powder using a special formulation developed to withstand our rigorous Nordic climate.

WARRANTY & SERVICE



The best warranty in industry

- PVC: 20 years
- Sealed Unit: 20 years
- Hardware: LIFETIME
- Paint and aluminum: 10 years
- Labour: 1 year

A family business since 1947!

AbrisTek Doors and Windows provides a **qualified customer service** which is intended to be fast and efficient.



DISTRIBUTED BY



FIND YOUR RETAILER AND MORE INFORMATION ABRITEK.CA



CASEMENT AND AWNING WINDOWS
PVC and HYBRID series



2024/07



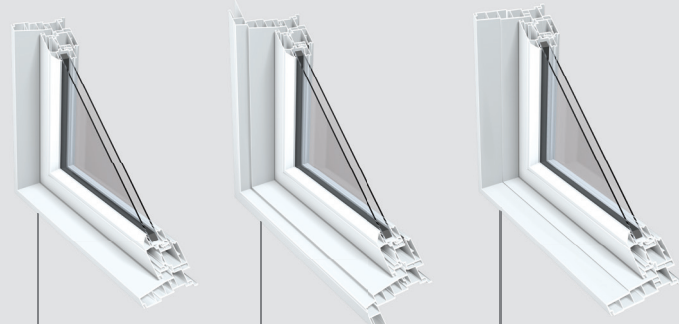
PVC series

This window system is the most **efficient** on the market. It meets the highest standards and is offered with a range of indoor and outdoor options. Its streamlined design combined with its exceptional technical features is creating a contemporary or classic masterpiece according to your needs.



FRAMES

- 5 1/4" frame
- 6 9/16" frame



5 1/4" frame
Contemporary sash
Without brick mold

6 1/4" frame
Contemporary sash
Integrated brick mold

6 9/16" frame
Contemporary sash
Without brick mold

MOLDING



Other moldings available

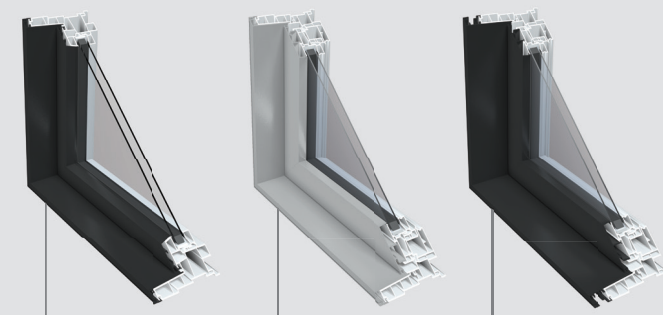
HYBRID series (PVC + aluminum)

Offering a perfect combination between nobility of aluminum and energy performance of PVC, our hybrid window series is a synonym of comfort, **character and elegance**. This generation of windows is designed specifically for the rigors of our northern climate and challenge market standards.



FRAMES

- 5 3/4" frame
- 6 9/16" frame

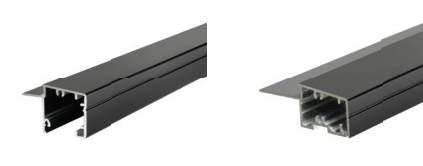


5 3/4" frame
Contemporary Fixed
Black

5 3/4" frame
Contemporary sash
Clear anodised

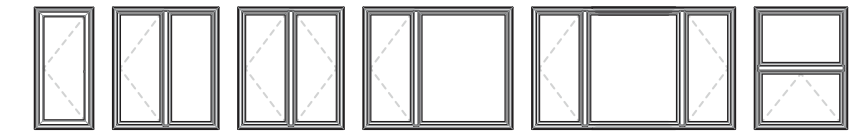
6 9/16" frame
Contemporary sash
Black

MOLDING



Other moldings available

MANY MODELS



FEATURES

- Double or triple energy glass + argon gas
- Fold-on handle and multipoint lock system
- Triple continuous weatherstrip
- Built-in drywall and wood return for interior jamb extension
- Interior screen (Aluminum frame and fiberglass wick)

PVC series

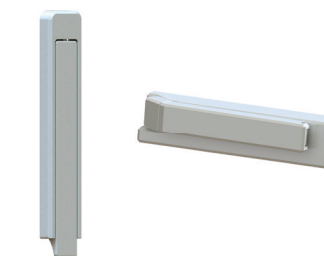
- Welded rigid PVC 5 1/4" frame and sash without brick mold.
- 6 1/4" frame with integrated brick mold.
- 6 9/16" frame without brick mold. (This frame reduces condensation risk.)

HYBRID series

- Hybrid 5 3/4" extruded aluminum exterior frame. Frame and sash are made with rigid PVC and welded corners interior.
- 6 9/16" hybrid frame. (This frame reduce condensation risk.)
- Exterior standard colors: white, black and commercial brown.

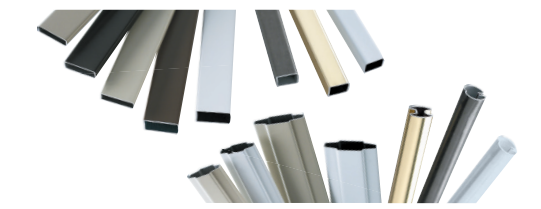
HARDWARE

- New Design
- Superior performance
- LIFETIME Warranty
- Very smooth opening system
- White or black finish



CUSTOMIZE

Integrated grills



Divided lights



OPTIONS

- Various molding
- Interior jamb extension
- Many architectural design windows
- Special glass selection
- Anodised finish - 5 3/4" Hybrid frame
- Wide selection of colors painted by Abritek
- Limited device
- Many possibilities of models

